

Figure S1: Close-up of winiHS and abs(iHS) in the Lactase region.

Red lines show winiHS and black dots show the absolute value of the iHS at each SNP. The recombination rate (extracted from a genetic map) and the mean (across 30 SNP windows) of the frequency of the derived allele are shown as grey lines. The genome wide averages of the derived SNP frequencies are shown as black lines. The LCT/MCM6 region is marked by a green vertical line.

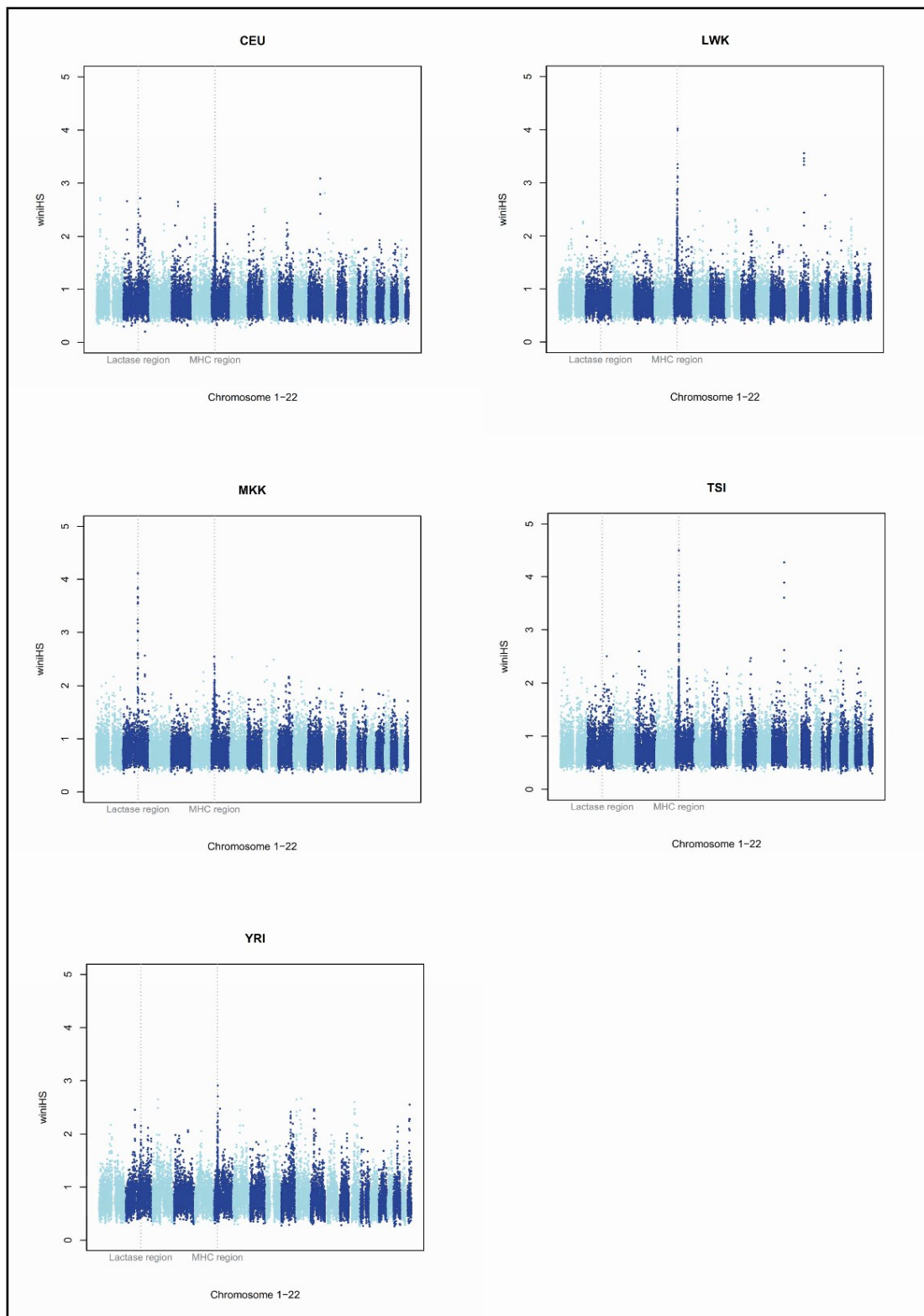


Figure S2: Genome wide signal of winiHS

The value of winiHS (see text) across the genomes of the five different populations (“MKK” is the same as Fig 1a). Light blue corresponds to odd-numbered chromosomes while even-numbered chromosomes are colored dark blue. The LCT/MCM6 region on chromosome 2 and the MHC regions on chromosome 6 are marked by horizontal dotted lines.

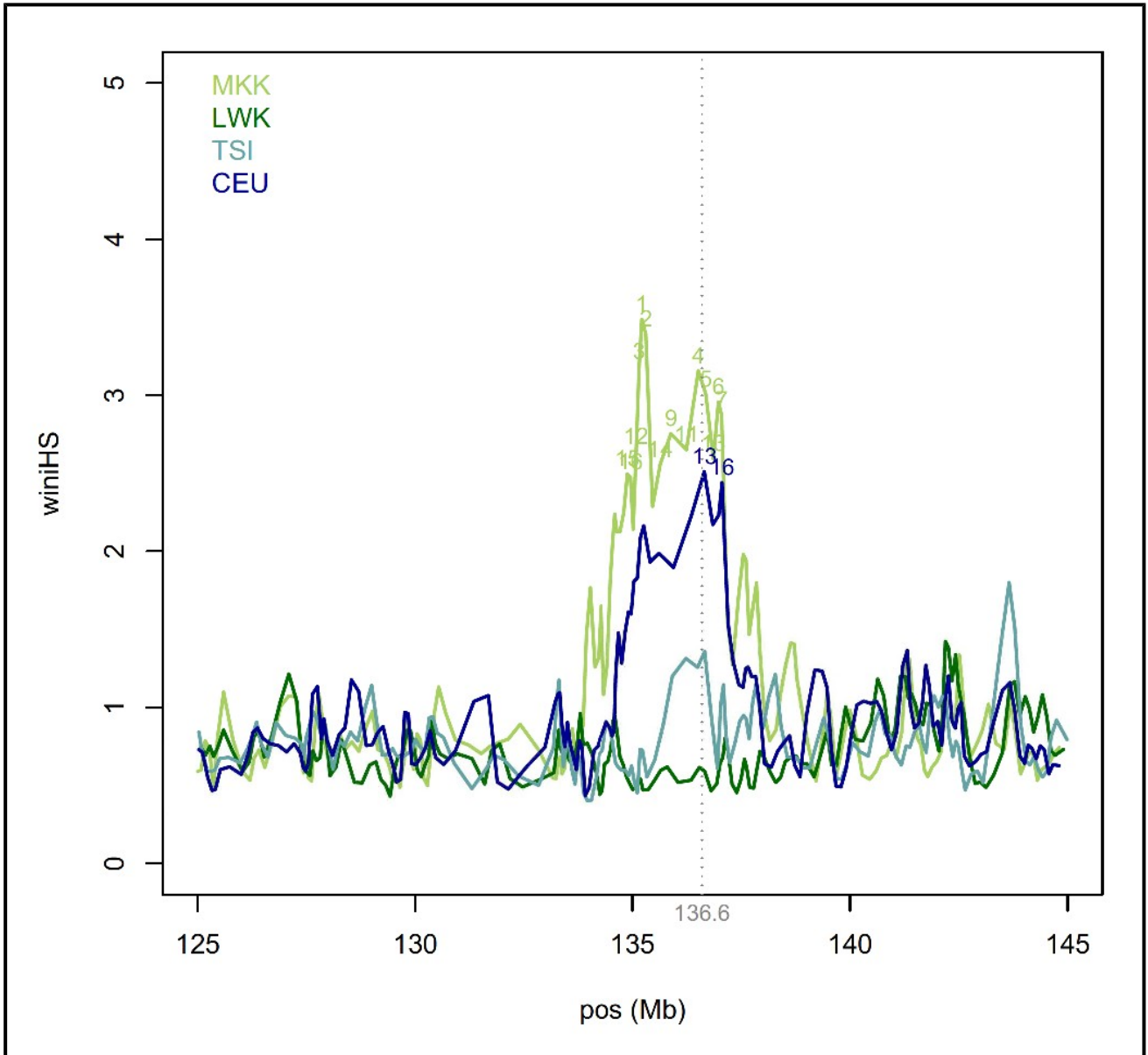


Figure S3: Close-up of winiHS in the Lactase region after sub-sampling

The signal of winiHS for random sub-samples of size 34 chromosomes (as in CEU) from MKK, TSI and LWK (the sample size of YRI was < 34 chromosomes) for the Lactase region (position 125 Mb to 145 Mb on chromosome 2). The numbers correspond to the genome-wide rank for each population and for a particular sub-sample.

Table S1. Top 20 iHS signals in five screened HapMap populations

CEU		
Pos (Mb)	iHS	Chrom
111.5136	3.088006	12
19.75555	2.812432	13
111.3191	2.793917	12
36.18421	2.722007	1
153.2837	2.719003	2
35.82069	2.680341	1
33.04724	2.663218	2
61.02888	2.648294	4
30.07415	2.606434	6
61.24734	2.572422	4
30.33422	2.543065	6
12.69004	2.515031	9
136.6525	2.510171	2
30.08417	2.498444	6
12.76259	2.461627	9
137.06	2.440347	2
29.82169	2.428748	6
30.31388	2.42802	6
111.7168	2.426535	12
31.96592	2.419163	1

LWK		
Pos (Mb)	iHS	Chrom
32.98188	4.023639	6
32.97232	3.987295	6
60.97933	3.558014	14
60.7698	3.463295	14
60.63646	3.408197	14
32.99561	3.352811	6
60.52277	3.342095	14
33.01709	3.280204	6
33.08037	3.118734	6
33.06651	3.095156	6
33.03736	3.020376	6
33.05056	2.890877	6
29.98957	2.857998	6
29.97239	2.813247	6
30.03787	2.792066	6
48.23338	2.771089	16
29.9394	2.692035	6
33.05867	2.667021	6
29.95638	2.589938	6
30.00735	2.528652	6

MKK		
Pos (Mb)	iHS	Chrom
136.5409	4.112183	2
136.7059	3.841387	2
135.217	3.818785	2
135.1641	3.672876	2
136.976	3.653258	2
136.8674	3.569351	2
136.298	3.548592	2
135.2961	3.540226	2
135.0966	3.2439	2
135.9899	3.17147	2
135.7608	3.031561	2
137.0461	3.015288	2
135.0323	2.851486	2
135.6034	2.607858	2
134.9761	2.597347	2
135.4415	2.580779	2
201.1186	2.562867	2
27.26108	2.544556	6
20.44194	2.533657	7
137.1048	2.520866	2

TSI		
Pos (Mb)	iHS	Chrom
30.08358	4.493661	6
111.6711	4.270888	12
30.31442	4.023579	6
30.12571	3.902072	6
30.33327	3.896726	6
111.8615	3.889368	12
30.07437	3.80344	6
30.09565	3.745166	6
111.4783	3.605065	12
30.11562	3.453216	6
30.1399	3.350242	6
30.10759	3.24521	6
30.17082	3.147916	6
30.02772	3.060195	6
30.1564	2.906034	6
30.04113	2.74206	6
30.06047	2.705878	6
30.29058	2.699349	6
30.18807	2.686125	6
29.63448	2.632934	6

YRI		
Pos (Mb)	iHS	Chrom
32.98262	2.912054	6
32.97142	2.704569	6
47.43466	2.665462	11
51.92369	2.646602	3
5.29908	2.646195	11
50.28133	2.599554	15
36.55612	2.549648	22
51.48017	2.48339	3
52.89389	2.473592	6
50.51571	2.46728	15
32.64058	2.463755	12
81.76211	2.455185	2
38.86745	2.447379	11
65.51582	2.444067	7
32.15456	2.435428	12
5.206774	2.415931	11
86.56176	2.413429	10
50.34947	2.398092	15
50.42868	2.388587	15
32.99871	2.385681	6